



Butte-Silver Bow Superfund Advisory and Redevelopment Trust Authority (SARTA)

1. 2019 Application from Friends of Stodden Park (FOSP) Redevelopment Trust Fund- Program 7- Community and Economic Development-

Montana Tech/Big Butte Trailhead Project

2. Project Sponsor Information

Sponsor: Friends of Stodden Park

Project Contact: Jon Wick, Project Lead

Mailing Address: 1128 W. Diamond, Butte, MT 59701

Email: info@friendsofstodden.org

Telephone: FOSP- (406) 497-1200; Jon Wick, Project

Lead- (406) 498-6328

Organization History: Friends of Stodden Park (FOSP), formerly known as Splash Butte, a registered 501(c)(3) organization, was founded in 2007 to support the building of a waterpark for the people of Butte. Our group was instrumental in the passing of the 2016 bond needed to support the project and involved in the design of the project. We effectively coordinated with Butte Silver Bow and partners to conduct community meetings, distribute information on the project and costs, and raise funds to support key enhancements to the project. The enhancements, such as the lazy river and slides, resulted in the site becoming much more than a simple pool. The group was recognized for its efforts by the Butte Chamber of Commerce's at its 107th annual dinner. With the pool project complete, the group is continuing its work to fund swim passes for children in need while turning its attention to parks, recreation, conservation lands, and forestry in the community of Butte, Montana and Silver Bow County.

Project Staff Biographies:

Jon Wick, Project Lead: Jon, with his wife Cassie, is an owner, founder, leader, design master, traveler, husky herder of 5518 Designs, a retailer in uptown Butte, America. He is involved in many activities, including business, recreational and charitable, that help make Butte a great place to visit and live. Jon received his Master's in Technical Communications from Montana Tech and lives with his wife Cassie in Butte. Jon will

provide direct oversight of this project and serve as the point of contact for the partners, contractors and Friends of Stodden Park officers.

Friends of Stodden Park (FOSP) Leadership providing project oversight and support:

Katie Green, President: Katie attended the University of Montana and Creighton University School of Law and practices at Poore, Roth & Robinson, P.C. Katie is married and has two children, and she enjoys sports, family, friends, and football. She is honored to be associated with the Friends of Stodden Park and she is proud of our unique community. Serving as the president of FOSP since 2017, Katie will assist with oversight of this project and work with Jon and partners to ensure its successful completion.

JR Richardson, Vice President: JR was a principal founder of the Friends of Stodden Park and was essential in the successful effort to pass a bond providing funding for the new Butte waterpark. JR often acted as the spokesperson of the group, explaining the benefits and scope of the project to many groups in Butte. JR retired as Business Manager at Butte School District #1 and now uses his skillset to help coordinate the work of Friends of Stodden Park. With his experience many larger projects for Butte schools, JR will assist with monitoring of this project and provide guidance to the group as needed.

Kyle McGree, CPA, Treasurer: Kyle is a registered CPA with Newland and Company, PC. He received his BA and MBA from Gonzaga University and serves as treasurer for Friends of Stodden Park. Kyle, lives with his wife, and four lovely daughters in his hometown of Butte. In addition to his duties as treasurer, Kyle will closely monitor expenses of this project until completion.

Jim Murphy, Secretary: Jim joined Friends of Stodden Park to promote the effort to build a new waterpark and continues to work with the group as it expands its focus to all Butte parks. As an officer for Friends of Stodden Park will assist with project oversight and documentation of the project and work completed.

3. Project Abstract:

Montana Tech/Big Butte Trailhead. The Friends of Stodden Park (FOSP), in coordination with Montana Technological (Montana Tech) and Butte Silver Bow Parks and Recreation, propose to establish formal trailhead access point to the Big Butte Open Space trail system. The trailhead project aims to create an attractive, accessible and secure entry to one of Butte's key and closest recreational areas. A defined parking area and historic

gateway arch will lead users to the Big Butte Open Space trail system on the western end of the Montana Tech campus, at the western termination of Park Street, at the intersection of Bluebird Trail and Mining Way to the west of Montana Tech's Natural Resources Building.

The trailhead project will provide Butte citizens and Montana Tech students, families and visitors with a vital trail identifier, access, and parking. A defined, higher profile access point is an important component to increase use, in turn improving health, sense of stewardship, and quality of life. The project will improve an undeveloped dirt parking lot and enhance recent improvements on Montana Tech's campus as well as the significant investments in the Big Butte Open Space Park by Butte Silver Bow. Moreover, this community icon offers sweeping vistas of our rich mining history to those utilizing the trails. This natural area, relatively untouched by mining, continues to be a natural oasis that helps celebrate and tell our collective community story.

If funded, work on the project will begin in January of 2020 with an anticipated completion and dedication date of July 4, 2020. Cost estimates prepared by Water and Environmental Technologies (WET), Howe Steel and FOSP estimate the total cost of the project to be approximately \$45,000. FOSP and partners, are seeking \$25,000 from SARTA to supplement the approximately \$15,000 in direct funding to be provided by FOSP as well as \$4,500 of in-kind contributions from the group.

4. Project Summary-

Description of our goal and how the project enhance quality of life in Butte and provide broadly shared economic, environmental, or social benefits

Friends of Stodden Park (FOSP), in collaboration with Montana Tech and the Butte-Silver Bow Parks & Recreation Department, proposes the establishment of a formal trailhead accessing the Big Butte Open Space Park. Our goal is to create the Montana Tech/Big Butte Trailhead, an attractive, accessible and secure parking area/entry point for one of Butte's key recreational areas. If funded, our modest project will not only improve the aesthetics of an undeveloped area linking Montana Tech, the World Museum of Mining and the Big Butte Park, it will improve access for Butte residents, students and visitors.

Butte Silver Bow has invested a significant amount of resources to develop the Big Butte Open Space Park and usage of the area is increasing with foot and bike traffic. Likewise, Montana Tech continues to develop its campus, recently constructing dormitories and administrative/classroom structures on the northwest corner of the campus. At the present time, the area between campus and an access point to the Big Butte park is undeveloped and unattractive (see Attachment A). In addition to Butte residents and Tech students

accessing the site, an estimated 3,000 annual visitors to the World Museum of Mining pass this undeveloped area as they visit the museum. As visualized in our rendering (Attachment A and B), the project proposed will significantly improve the appearance of the area for all parties.

Development of this space with the support of Montana Tech and Butte Silver Bow for basic maintenance may result in environmental improvements by limiting severe erosion at the site and the reestablishment of natural vegetation. Through minimal grading and installation of a compacted gravel base for parking supporting a minimum of six or more vehicles, traffic and drainage will be better managed. Currently, drainage in the space is not controlled, resulting in a mud filled area limiting use and creating undesired erosion at the site and the accompanying roadways. By establishing controlled vehicle access to the site and creating a parking surface, the natural vegetation will recover while improving the drainage of the site.

Lastly, an area clearly designed for parking with direct sightlines to Tech, provides a safer and more accessible point for accessing this system of trails. We believe this will encourage more use of the site for students, residents, as well as visitors to the campus and mining museum. Hiking and biking are proven to have many health benefits, ranging from physical exercise you get when out on the trail, to emotional or mental relief that comes from being in nature. The National Park Service (NPS) promotes hiking as one of the best ways to engage in a great whole-body workout that builds stronger muscles and bones, improves your sense of balance and heart health while decreasing the risk of certain respiratory problems. The NPS also stresses that being in nature can boost your mood and improve mental health. They state: *“Spending quality time in the great outdoors reduces stress, calms anxiety, and can lead to a lower risk of depression, according to a study done by researchers at Stanford University. In addition to having mental health benefits, being outdoors opens up your senses to your surroundings and improves your sensory perception. Taking in the sights, smells, and feelings of nature has so many health benefits it can even be prescribed by a doctor”*.

It is our hope that groups of students of all ages will visit the site, learn about its recovery and history while other individuals and groups visit the site for the recreational opportunities. Successfully implemented, our project would provide an attractive focal point and improved access for anyone wishing to use one of Butte’s premier park areas. The benefits of recreational opportunities provided by spaces like the Big Butte area are many.

Detailed description of our project and how the project will address economic or community development challenges by enhancing, improving, or otherwise beneficially leveraging community resources

The trailhead project will provide Butte, citizens and Montana Tech students, with a vital trail identifier and parking area. Butte Silver Bow has vigilantly worked on a system of trails throughout the Big Butte Open Space Park, since acquiring the land in 2006. The Big Butte Open Space Park/Big M is a brightly glowing landmark that symbolizes Butte, Montana Tech, and victory. While other towns and schools designate a letter on their local hill, the Big Butte Open Space Park/Big M is an illuminated, flashing letter on a dormant volcano, which is hard to best. From the top the views of the Summit Valley are breathtaking, with the Continental Divide to the east, the Highlands to the south, and the Pintlars/Flint Creek Ranges to the west. To the north is the Berkley Pit, and one can plainly see the undeniable effects of historical mining on the landscape below. Yet local grasses, trees, bushes, and flowers are thriving on the Big Butte, in addition to deer, fox, squirrels, mice, and a variety of birds and insects. The Big Butte stands as our largest natural feature, looming over our tallest headframes and buildings. While the Big Butte was not directly affected by a mine, it stands today as Butte's highest point, and provides views of our mining past and our future, the recovering environs.

The trailhead project will improve citizens' access to the Big Butte Open Space Park trails, but the trailhead project will be more than just a place to park a car or a bike trailer. The trailhead project will mitigate problems associated with the Big Butte Open Space Park area, such as drug related vagrancy and garbage. It will be the junction of the city and the college; a safe, well-maintained area that will welcome Montana Tech students and all recreational users alike. Having the trailhead project on Montana Tech land increases security and cleanliness, as does increasing the number of overall recreational users to the Big Butte area. Greater access to the Butte Big trail system is an important component to Butte citizens' ability to recreate-run, hike, walk, bike, and ski, and this will in turn improve the health and quality of life for citizens. Montana Tech's enthusiastic commitment to the project will encourage appropriate use of the trailhead. In the last five years alone, approximately 19 million dollars of gifts/donations and 19 million in matching state funds and bonds have been invested in the construction of the Natural Resource Research Center, the Frank and Ann Gilmore University Relations Center, and the Student Success Center. The college's dedication to innovation and campus improvement can be utilized with the creation of the trailhead, and now is the time to capitalize on the college's success. Montana Tech will then showcase the trailhead in recruiting and reflecting the quality of student life. The original Big M was created by Montana Tech students in 1910, and the trailhead project will honor student efforts and celebrate the recreational potential of the Big M and the Big Butte Open Space Park.

The design of the arch correlates to the arches that grace the base of the hill on Park Street, the Mining Museum, and Stodden Park. Hawe Steel is the hands-down local leader in metal fabrication and design, and the proposed design is elegant and simple at once. The Big Butte Open Space Park recreational area and trails are for the citizens of Butte, the students of Montana Tech, and all recreational users. Public land and open space, in

the immediate vicinity of uptown Butte, is remarkable and lacking in surrounding communities. The trailhead project will recognize this unique opportunity to facilitate greater access to the Big Butte area and trails, and to expose citizens to the natural ecosystem. While the trailhead is expected to draw out of town visitors, the purpose of the project is to enhance the local community's experience on the Big Butte trails and in the general Big Butte recreational area. Improving access benefits the entire community by promoting recreation and encouraging responsible stewardship for the area. Encouraging responsible stewardship is as relevant now as it was in 1910, for our community to respond to the impact of mining and to honor environmental regrowth. One of the best examples of Butte's ingenuity and grit is the way this community responds positively to challenge, as demonstrated by our local government, business leaders, and our own premier institute of higher education, Montana Tech. The trailhead project will embody the partnership between the city and the college, and the aesthetic will celebrate Big Butte's ecological beauty, recreational possibility, and the city of Butte's victorious spirit in the face of challenge.

Narrative Description of Budget

The total estimated budget for the Montana Tech/Big Butte Trailhead project is \$44,895, which includes \$40,395 for the cost of construction materials, and supplies and \$4,500 of in-kind match from Friends of Stodden Park.

The request of \$25,000 in SARTA funds and \$15,395 in cash from Friends of Stodden will pay for the construction of the arch and materials and supplies needed to complete the improvements for the trailhead.

In the event partial SARTA funds are appropriated, Friends of Stodden may need to adjust project timeline to secure additional funding.

Budget Table

**Opinion of Probable Cost
prepared by Water &
Environmental Technologies**

Opinion of Probable Cost

Description	Unit	Qty	Unit Price	Extended
Bid Item 1 - Mobilization / Demobilization	Lump Sum	1	\$ 1,000.00	\$ 1,000.00
Bid Item 2 - Taxes, Bonds, Insurance	Lump Sum	1	\$ 500.00	\$ 500.00
Bid Item 3 - Safety and Health	Lump Sum	1	\$ 400.00	\$ 400.00
Bid Item 4 - Arch	Lump Sum	1	\$ 15,930.00	\$ 15,930.00
Bid Item 13* - Removal of Existing Subgrade	Cubic Yard	425	\$ 10.00	\$ 4,250.00
Bid Item 14 - Placement of Fabric	Square Yard	1300	\$ 0.80	\$ 1,040.00
Bid Item 16 - Placement of Crushed Base	Cubic Yard	425	\$ 19.00	\$ 8,075.00
Bid Item 18 - Receptacle	Each	1	\$ 700.00	\$ 700.00
Bid Item 19 - Signage	Each	1	\$ 750.00	\$ 750.00
Bid Item 20 - Parking Bumpers	Each	10	\$ 150.00	\$ 1,500.00
Bid Item 21 - Fencing	Linear Foot	250	\$ 15.00	\$ 3,750.00
Bid Item 22 - Miscellaneous Working Units	Units	2,500	\$ 1.00	\$ 2,500.00
*125' x 40' (road) + 100' x 65' x 1' = 425 CY			Total	\$ 40,395.00

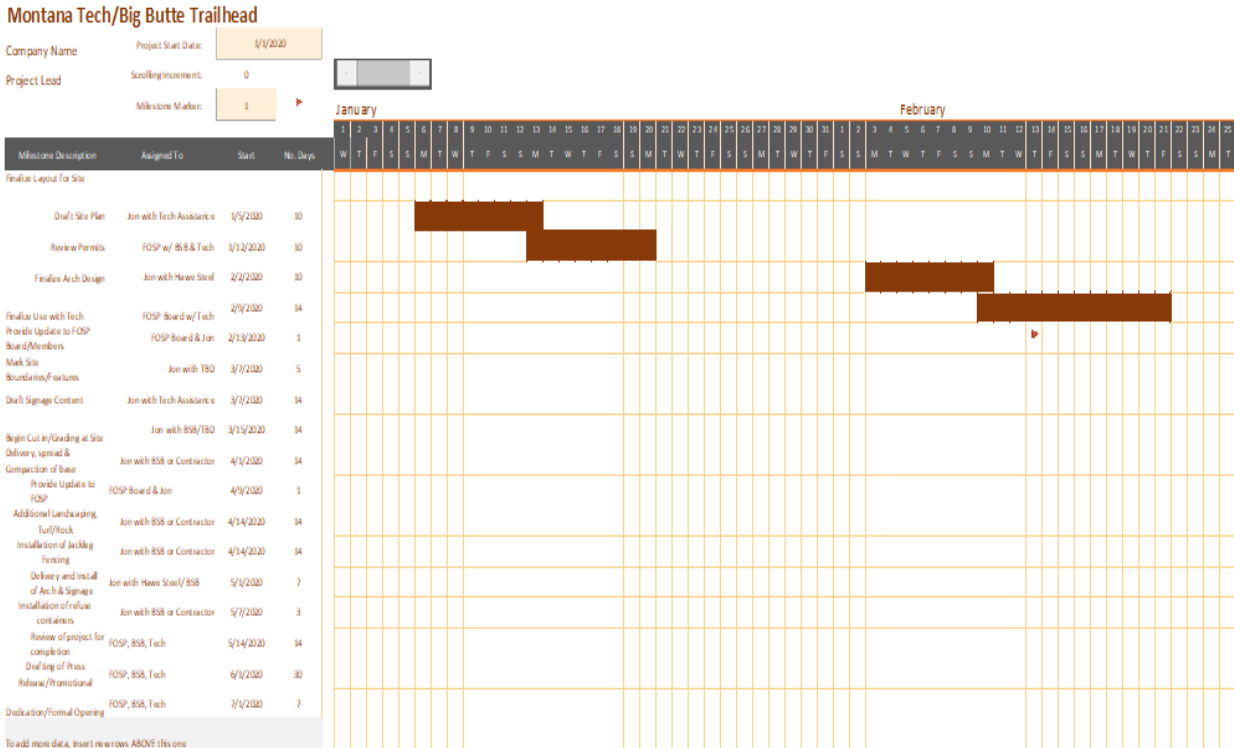
Sources of Funding/Support & Funding Request:

Project Personnel					Hours	Rate		SARTA	Friends of Stodden			Total
John Wick	Design				50	\$50.00			\$2,500.00			\$2,500.00
Volunteer Hours					100	\$20.00			\$2,000.00			\$2,000.00
							subtotal		\$4,500.00			\$4,500.00
Contracted Services												
	Construction of Arch and Lot							\$25,000.00	\$6,195.00			\$31,195.00
							subtotal	\$25,000.00	\$6,195.00			\$31,195.00
Supplies and Materials												
	Fencing, Parking Bumpers, Fencing and Miscellaneous Working Units								\$9,200.00			\$9,200.00
									\$9,200.00			\$9,200.00
							TOTAL	\$25,000.00	\$19,895.00			\$44,895.00

Project Timeline

If SARTA funding is awarded, FOSP will immediately begin to finalize plans with Montana Tech and Butte Silver Bow in early January of 2020. The estimated milestones and timeframe are detailed in Attachment E, pages 1 through 4. We estimate completion of the project and dedication will occur during the first week of July 2020. Please see Attachment E for complete details on our timeline and milestones.

Snapshot of Proposed Timeline, page 1 of 4, as reflected in Attachment E:



Additional Partners, including direct and in-kind support

FOSP has been fortunate to have the support of Montana Tech and Butte Silver Bow Parks and Recreation Department (letters of support attached). While formal details will be completed if funding is awarded, maintenance and support of the site will be assured through these partnerships and the commitment of FOSP. As detailed in our budget narrative, FOSP anticipates directly contributing approximately \$15,000 to the project as well as \$4,500 in in-kind contributions.

On behalf of FOSP and our partners, we thank SARTA for this opportunity and would be happy to provide any additional detail needed.

Attachment A: Rendering of Montana Tech/Big Butte Trailhead Project
Current View of Area Proposed for Project



Enlargement of Area with Proposed Improvements (Overhead View)

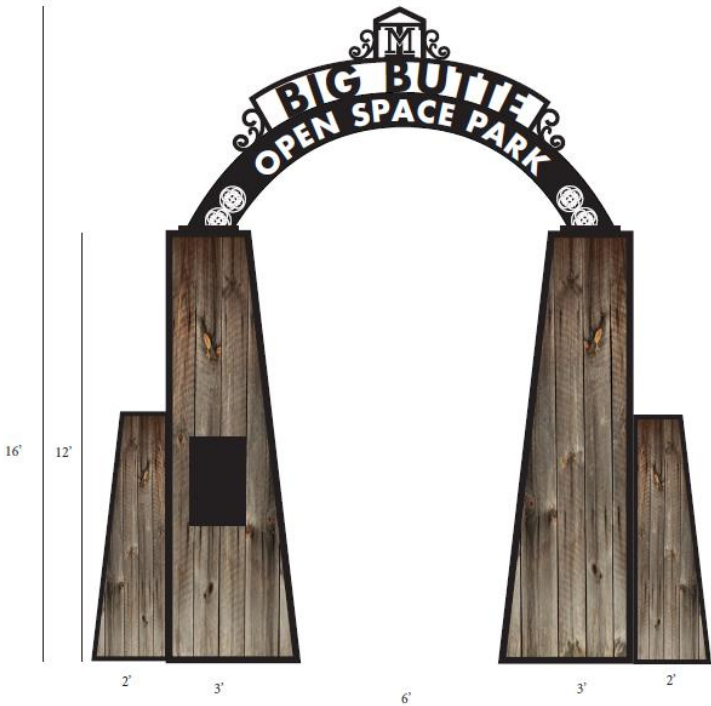


Attachment B:


Street View Rendering of Montana Tech/Big Butte Trailhead Project (Looking West)



Proposed Arch Design- Montana Tech/Big Butte Trailhead Project



Attachment C: Additional Information on Big Butte Open Space



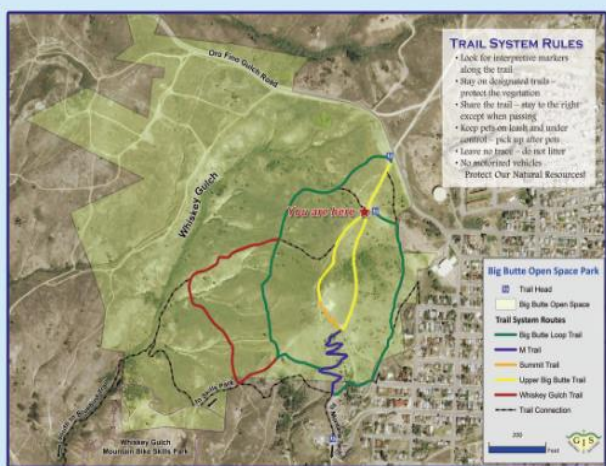
BIG BUTTE OPEN SPACE

BIG BUTTE'S PROMINENCE

Big Butte is Butte's most significant natural landmark and the namesake of the community. The Big Butte landform is the eroded neck of an extinct volcano that last erupted over 49 million years ago. That's long after the granite that hosts Butte's rich mineral deposits was formed about 76 to 78 million years ago. See the panorama along the bottom of this sign to learn more about Butte's rich mining heritage and the mine headframes throughout Uptown Butte.

In 1910, struck by the formation's independence and proximity to the Montana School of Mines, students surveyed the southeast slope and scaled the hill to monogram the Big Butte with an "M." The "M" was illuminated in 1962 and remains a way-finding beacon for the Butte community.

Since Butte's inception, residents have considered Big Butte a sentinel and recreation resource. Many Butte residents recount their first experience climbing to the summit of the Big Butte, armed with pack lunches and a sense of adventure. Butte-Silver Bow acquired the Big Butte in 2006 to protect the recreation area for future generations to enjoy.



TRAIL SYSTEM RULES

- Look for interpretive markers along the trail.
- Stay on designated trails - protect the vegetation.
- Share the trail - stay to the right except when passing.
- Keep pets on leash and under control - pick up after pets.
- Leave no trace - do not litter.
- No motorized vehicles.
- Protect Our Natural Resources.

Big Butte Open Space Park

- Trail Head
- Big Butte Open Space
- Trail System Routes
- Big Butte Loop Trail
- M Trail
- Sunset Trail
- Upper Big Butte Trail
- Whiskey Gulch Trail
- Trail Connection

PARK'S PARTNERSHIP

Recognizing the Big Butte for its history and significance to the Butte community, the state's Department of Justice Natural Resource Damage Grant Program granted Butte-Silver Bow funds to acquire the Big Butte. Since 2005, Natural Resource Damage Program funds have contributed to the development of recreational trails and perimeter protection to aid the return of native plants and animals to the area.

Community volunteers, service organizations, and local job-training organizations contributed to initial phases of the park improvement. In 2012 and 2013, local Eagle Scout Mitch Rosa inspired the development of this sign to interpret the uniquely Butte experience of climbing the butte and experiencing the vista.

NATURAL FEATURES

Butte is surrounded on three sides by the Continental Divide, formed by the Rocky Mountains. The Rockies' East Ridge runs along the eastern extent of Butte and Silver Bow County and links to the Highland Mountains just south of Butte. The Highlands ascend to just over 10,000 feet. West of Big Butte, in the distance, the Pintler and Flint Creek Ranges can be seen.

The **Lexington Mine**, north of Butte in Walkerville, played a significant role in Butte's labor history. In June 1878 miners went on strike against A.J. Davis, who ran the "Lex," and the Walker Brothers, who ran the Alice Mine, protesting wage cuts amid unsafe working conditions. The miners' staunch position led to the first labor strike in Montana and the formation of the Butte Workmen's Union No. 1, giving birth to Butte's storied labor movement.

The **Bell-Diamond** is known as such because the Diamond headframe was moved to the Bell mine. The Bell-Diamond is the oldest headframe on the Hill and the first made of structural steel, an innovation in the 1890s. The mine was an important copper producer for W.A. Clark, helping him become one of Butte's Copper Kings.


Located in Butte's Centerville neighborhood, the Mountain Cove or "The Cove," as it is referred to by natives, is Butte's deepest mine. Descending an astounding one mile, The Cove symbolizes the dramatic depth at which Butte's miners worked. Dangers at such depths drove demands for safe working conditions in the mines of Butte.



Butte's most modern operation, the **Kelly Mine** utilized a new, innovative block caving technique that marked the Anaconda Company's movement away from the traditional stoping method. The Kelly features two headframes, one used as a main shaft and the other as an ore shaft. The ore shaft's headframe is made of steel and concrete and is the largest headframe on the Butte Hill. The Kelly's headframes were the last to be erected on the hill, and the second largest in Montana.

The **Steward Mine** was considered the hottest mine on the Butte Hill, reaching 112 degrees Fahrenheit (about 44 degrees Celsius) on some levels. The Steward mine ran's architecture and process went hand in hand, with the brick engine house protecting the expensive steam engine that raised and lowered men and ore from the mine.

Mining in Butte began in the vicinity of the **Original**, which started as a prospecting site and evolved into the below-ground works typical of Butte. Formal production was initiated in 1878 and continued until the late 1940s. After the turn of the 21st century, the Original was transformed into a rock-ledge amphitheater and community space, where Butte's residents and visitors have shared the summer months.

The large headframe visible in the foreground is the **Anselme**, "the workhorse" of the Hill. The Anselme steadily produced zinc, silver and copper. The site is Butte's most well-preserved mine yard, providing visitors a good example of how the mine works. For more on Butte's mining history, visit the World Museum of Mining, located at Montana Tech on West Park Street, www.miningmuseum.org. For more on the unique geology of the area, visit the Mineral Museum, 600 W. Park Street, www.mineralmuseum.org.



406-497-6200
www.butte-mt.gov

Attachment D: Letters of Support/Quotes

Butte Silver Bow Parks and Recreation

Montana Tech, Office of the Chancellor

Hawe Steel Design, Arch Quote



THE CITY-COUNTY OF Butte-Silver Bow

Parks & Recreation
J.P. Gallagher, Director
Ph: 406-497-6571
jgallagher@bsb.mt.gov

DEAR SARTA BOARD MEMBERS,

Montana Tech Trailhead Arch and access to the Big Butte trail system:

It is my pleasure write a letter of support for the design and development of the proposed project of creating a trailhead and arch originating on the Montana Tech Campus that accesses the Big Butte Trail System.

The Butte-Silver Bow Parks & Recreation Department along with the Butte-Silver Bow Department of Superfund has been developing and working closely with trail users to develop a network of trails on the Big Butte.

John Wick a member of the Friends of Stodden Park brought this idea to the Friends of Stodden Park Board of Directors and it was overwhelming supported by all members. The Parks & Recreation Department will work closely with the project coordinators and Montana Tech administration to develop this project into an asset for both Montana Tech students and faculty, and the community of Butte-Silver Bow.

I fully believe that a trailhead that originates from the Montana Tech Campus will create a sense of ownership and pride of the Big Butte (Big M) trail system. This project on the Montana Tech Campus would closely resemble the pride in the Missoula Community of the M trail that originates from the University of Montana's Campus.

Respectfully,

J. P. Gallagher

J.P. Gallagher, M. Ed., CPRP



Montana Technological University

MontanaTech

Office of the Chancellor

1300 West Park Street
Butte, Montana 59701
(406) 496-4129
Fax (406) 496-4387
chancellor@mttech.edu
www.mtech.edu

October 22, 2019

Superfund Advisory and Redevelopment Trust Authority
155 W Granite
Butte, MT 59701

RE: SARTA Grant Letter of Support

Dear Superfund Advisory and Redevelopment Trust Authority:


It is my pleasure to write this letter in support of one of our alumni and colleagues, Jon Wick, and the board members of The Friends of Stodden Park and their proposed project for the Big Butte Trailhead. We have had a number of discussions regarding this project and look forward to collaborating and providing as much support we can to bring this to completion.

The trailhead is adjacent to our campus and provides recreational activity and access for our community to 100's of miles of bike trails. With enrollment over 2,400 students, many of whom are outdoor enthusiasts and avid bikers, this is an exciting endeavor for Montana Tech.

Thanks in advance for your consideration and support of this project.

Sincerely,

Les P. Cook, Ed. D
Chancellor



Hawe Steel Design

Hawe Steel Design
1112 S. Arizona
Butte, MT 59701
Phone 406-782-4707
Fax 406-782-4713
E-mail kevin_hawe@msn.com

QUOTE:

To

Name: Mr Jon Wick
Company: 5518 Designs
Phone number: 1-406-299-3471
Email: jon@5518designs.com

From

Kevin Hawe

Phone 406-782-4707
Fax 406-782-4713
E-mail kevin_hawe@msn.com

Urgent
For Review
Please Comment
Please Reply

Date sent: 10-18-2019

Mr. Jon Wick,

We are pleased to provide budget numbers for the Montana Tech Blue Bird Trail Arch and Sign Backer.

Fabricate, paint and install the for mentioned for the total sum of \$12,860.00

Above price does not include the concrete footings which I estimate would cost \$3,070.00

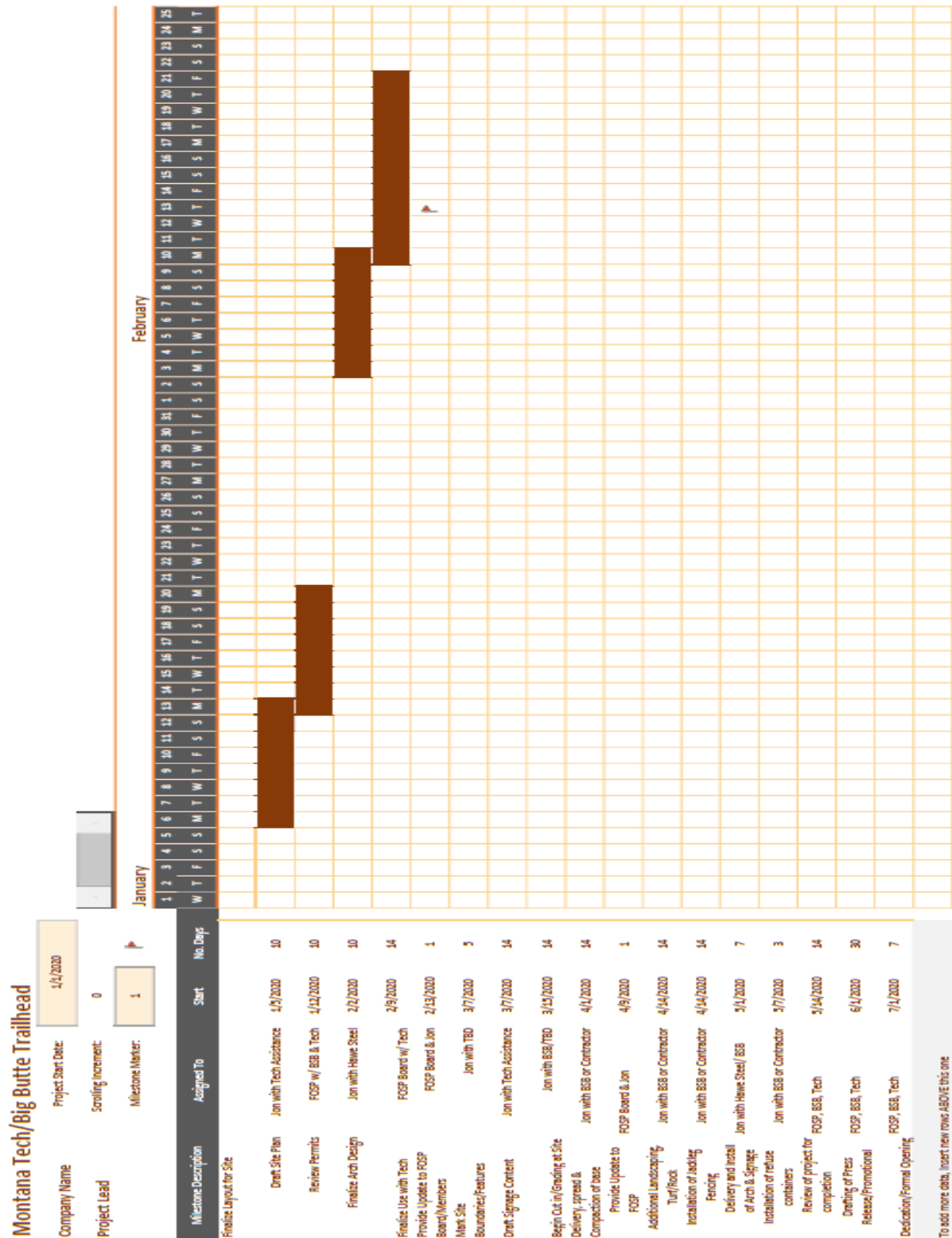
Total: \$15,930.00

Please call me with any questions you might have.

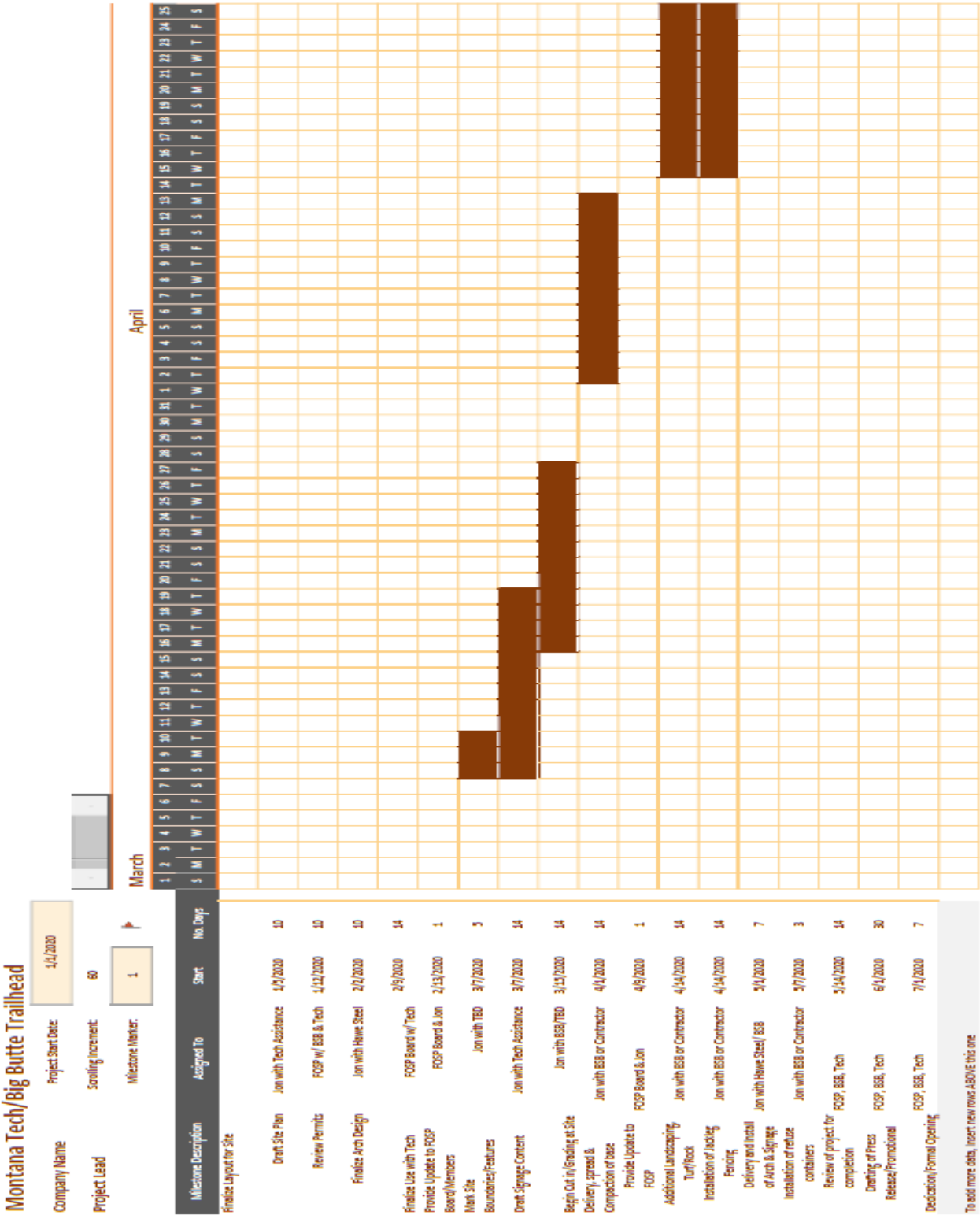
Thank you for considering Hawe Steel.

Thank you,
Kevin Hawe

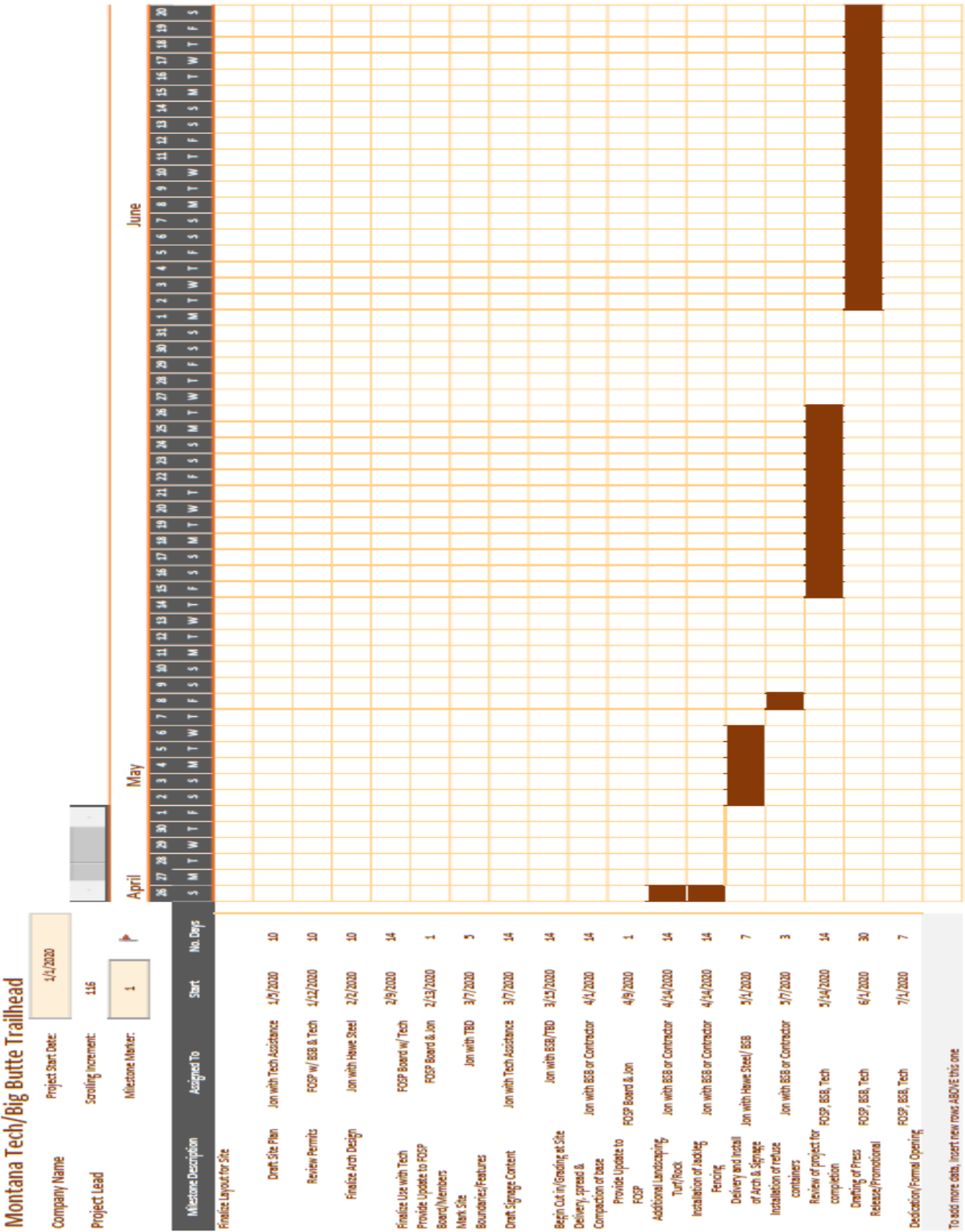
Attachment E: 1 of 4 Detailed Project Timeline



Attachment E: 2 of 4 Detailed Project Timeline



Attachment E: 3 of 4 Detailed Project Timeline



Attachment E: 4 of 4 Detailed Project Timeline

